

The VEGF-C/Flt-4 Axis Promotes Invasion and Metastasis of Cancer Cells

Jen-Liang Su, Pan-Chyr Yang, Jin-Yuan Shih, Ching-Yao Yang, Lin-Hung Wei, Chang-Yao Hsieh, Chia-Hung Chou, Yung-Ming Jeng, Ming-Yang Wang, King-Jen Chang, Mien-Chie Hung, and Min-Liang Kuo*

*Correspondence: kuominliang@ntu.edu.tw

DOI 10.1016/j.ccr.2008.08.008

(Cancer Cell 9, 209–223; March 2006)

In this paper, certain images in [Figure 3C](#), [Figure 5B](#), and [Figure 6E](#) were mistakenly used during preparation and assembly of the figures; the corrected figures are shown below. The expression of CNTN-1 and β -actin shown in the left middle panel of the original [Figure 3C](#) (H928/vector and H928/VEGF-C cells stably transfected with CNTN-1 siRNA2) were not the appropriate figures and should be replaced with the corrected [Figure 3](#) here. Similarly, the expression levels of CNTN-1 and β -actin displayed in the original [Figure 6E](#) were incorrect and mistakenly used. The correct image is shown in the new [Figure 6](#). We also regret that several inadvertent duplications took place involving the original [Figure 5B](#) and [Figure 6D](#), as some of these images represented similar experiments analyzing primary tumors and lung metastases, respectively, using the same cell lines. This error occurred while submitting the revised manuscript, and the panels displaying immunoblots of tyrosine-phosphorylated Flt-4, expression of β -actin, and expression of VEGF-C were inappropriately replaced with images in [Figure 6D](#). We have replaced all of the images in [Figure 5B](#), which are shown correctly in new [Figure 5](#). All of the corrected data are consistent with our previous conclusions; hence, the experimental results and conclusions of this article are not affected by these modifications. The authors apologize for the inconvenience caused by these errors.

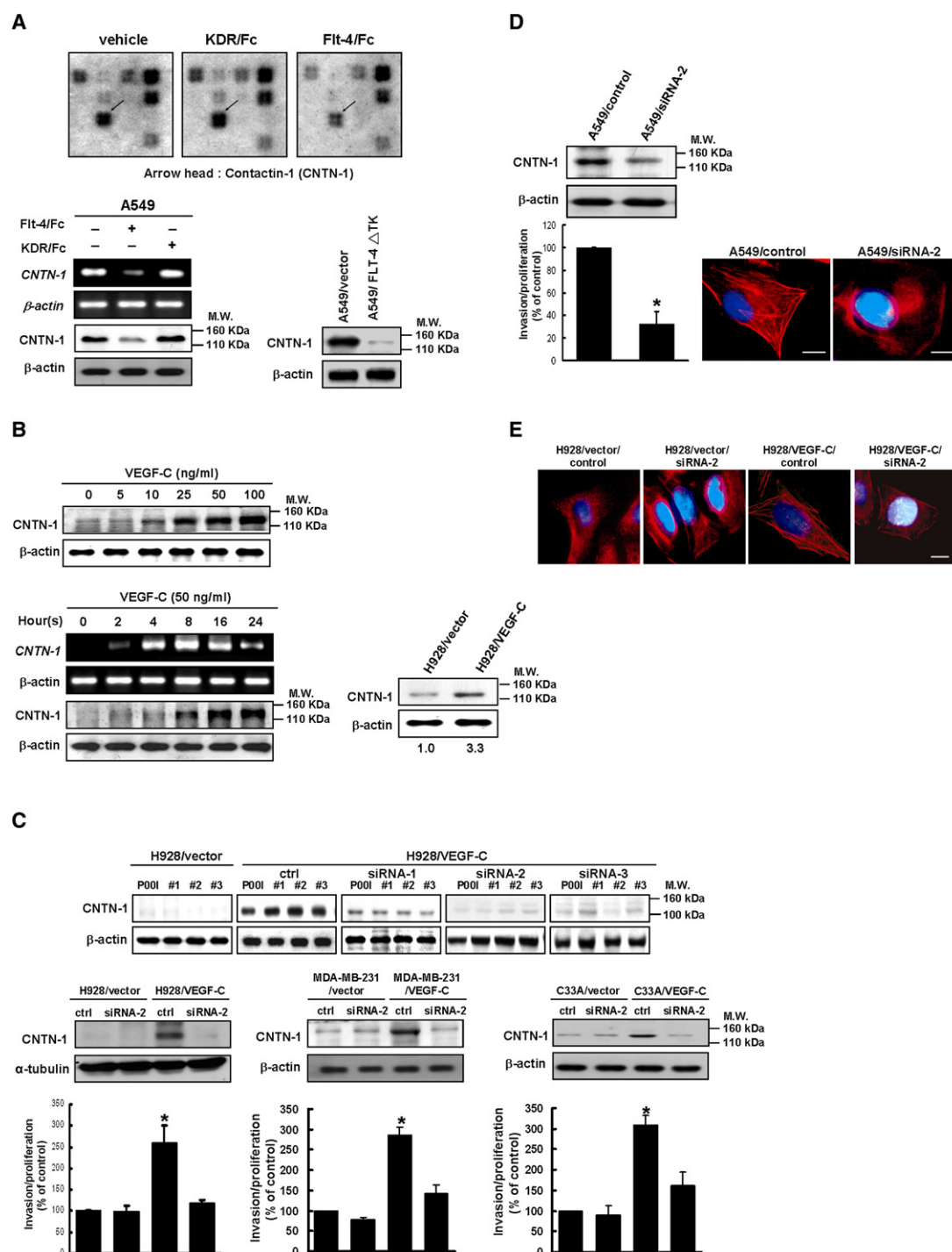


Figure 3.

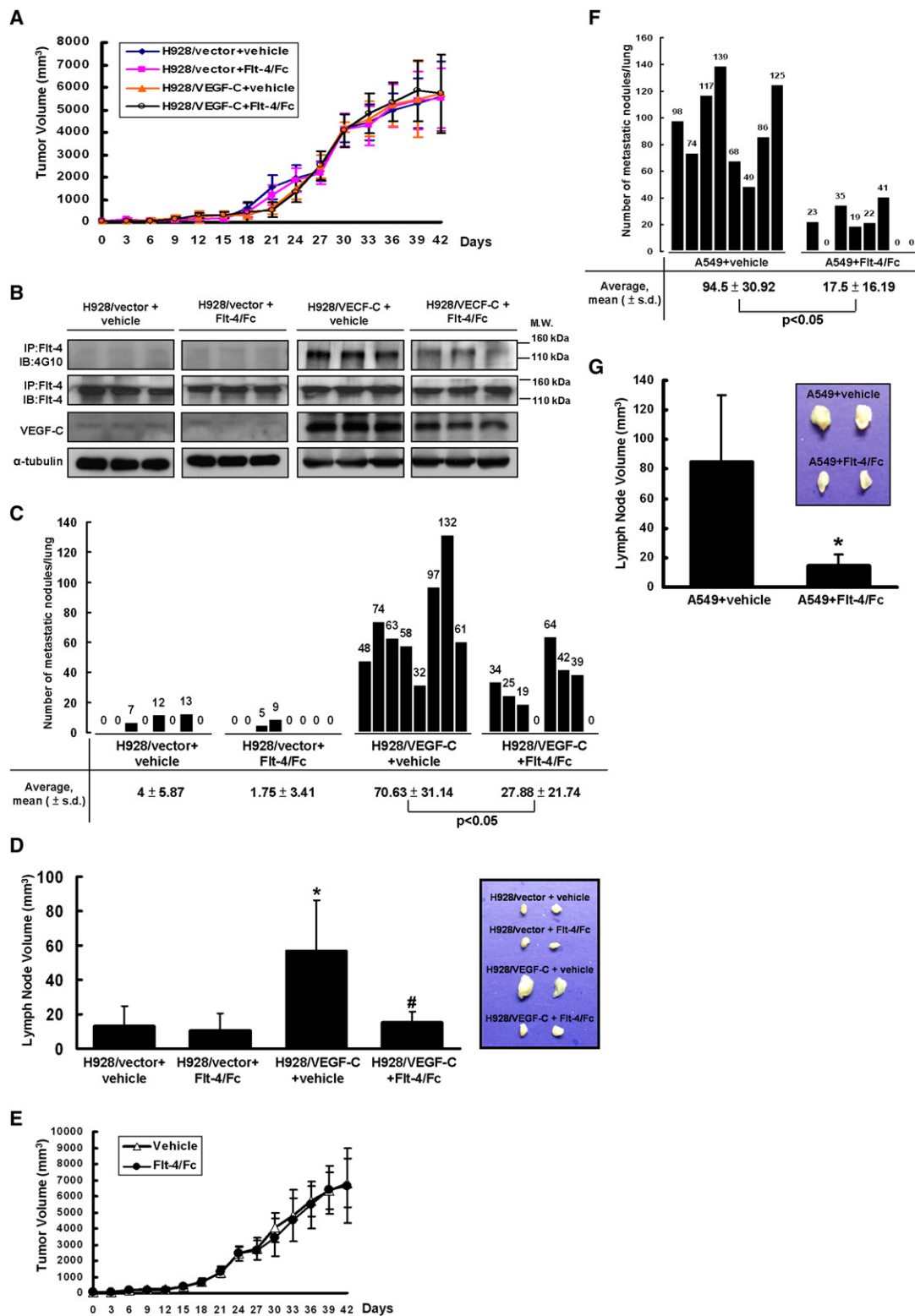


Figure 5.

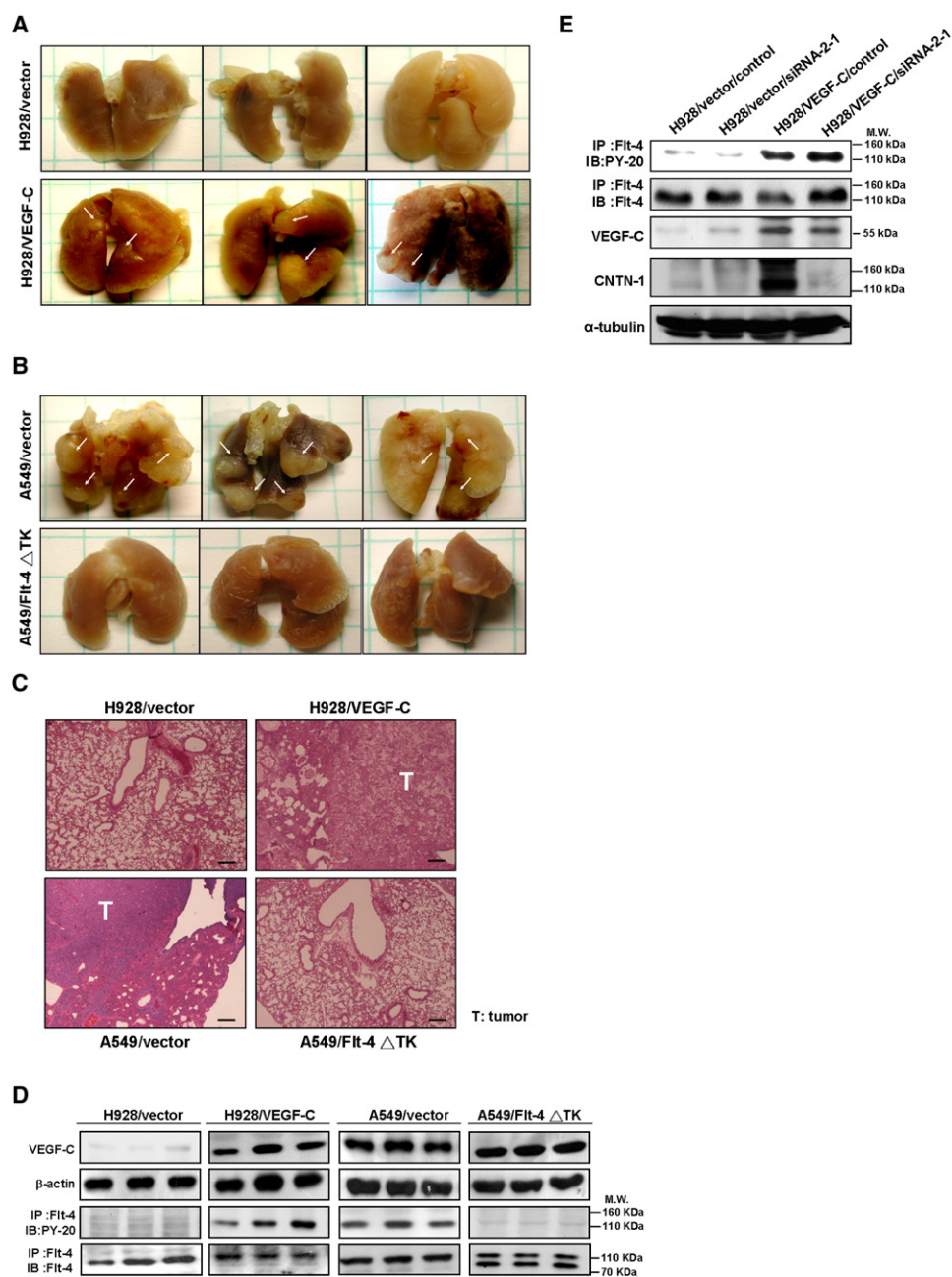


Figure 6.